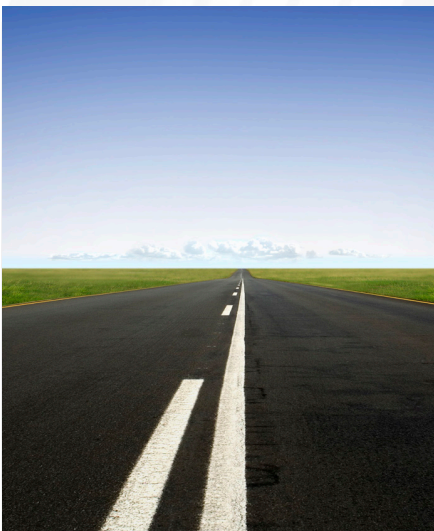


AASHTOWare Project Estimation™



The AASHTOWare Project Estimation™ module is a web-based cradle-to-grave estimation application designed to deliver accurate, reliable estimates for your construction program. It is a powerful tool that puts a variety of estimation methodologies at your fingertips. Regardless of the method of estimation you choose, your needs will be met with the AASHTOWare Project Estimation software.

This module is an integral part of the web-based AASHTOWare Project™ software suite. The flexibility and data access provided by web-based software allows for additional features that increase the accuracy of your estimates. For instance, the system includes bid history profile functionality that is dynamic, eliminating the need to retrieve data from external applications, and granting control and flexibility to the estimator. No longer bound by the predetermined settings selected by the system administrator, the estimator can exercise full judgment and control over the pricing parameters and make changes on the fly, even on an item-by-item basis if desired. The ability to set profiles to utilize rolling date ranges ensures that an agency can always generate historical prices from the most recent and appropriate set of data available in the application, eliminating the need for intervention and monitoring by a system administrator.



The AASHTOWare Project Estimation module creates a well-defined audit trail, allowing your agency to carefully monitor scope and budget over the entire lifespan of a highway improvement. A single point of entry for all cost estimates promotes a streamlined workflow for the cost estimate, eliminating the need for internal hand-offs that can lead to inconsistencies and scope creep.

AASHTOWare Project Estimation supports the following price derivation methods:

- Bid-based — provides actual historical bid data
- Cost-based — builds estimated prices based on projected equipment, labor and material costs, including appropriate mark-ups and overhead costs
- Reference-based — populates cost estimate item prices based on prices stored in reference items
- Parametric estimation — uses pre-engineered model parameters and construction criteria
- Ad hoc pricing — based on the estimator's personal experience
- Collection-based — provides the ability to group a collection of pricing tasks together for various pricing methodologies

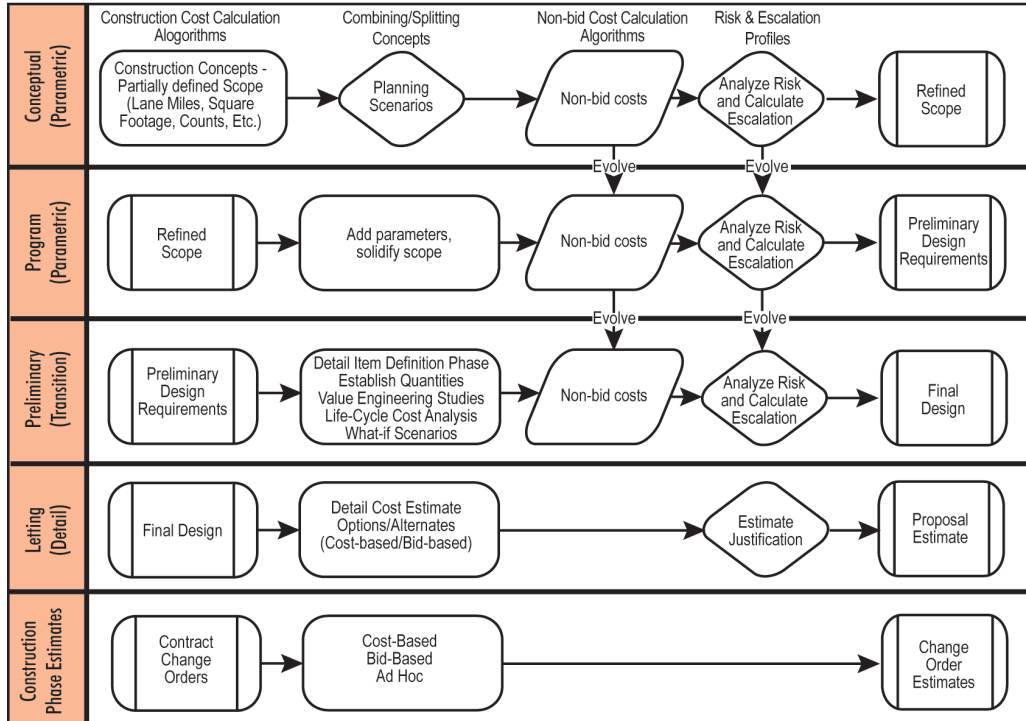


Users will be impressed with the wide range of functionality available in this one application. The software supports total cost estimation, including the assessment and assignment of risk contingency, life cycle analysis tools, expansion of existing import/export capabilities, inclusion of non-bid costs, non-construction costs, and markups, and the ability to utilize snapshots to create an audit trail for the agency's estimates. A sleek, interactive graphical display is available for bid-based pricing, allowing the estimator or analyst to discern quickly the impact of modifications to parameters or criteria.

Outside the confines of the cost estimate, executive managers have the ability to run a quick analysis of bid-history pricing that can be utilized in what-if scenarios and planning discussions. They can view those results in a variety of interactive graphical outputs, leveraging point-and-click data access.

Cradle-to-Grave Estimating

The diagram below depicts how an estimate evolves over time so there is no redundant data entry.



AASHTOWare Project Estimation provides a flexible user interface and extensive configuration options:

- Any user with proper access can attach files/URL links and add agency fields to any record in the system.
- System events and issue tracking enable an agency to automate complex processes and workflows that might require input or review from several different users.
- Thorough online help is available throughout the application, including configurable tool tips.

System Specifications

For details about system specifications for all AASHTOWare Project™ software, please refer to www.cloverleaf.net/sys_arch/.

For more information about this product, contact AASHTO or the AASHTOWare® contractor:



444 North Capitol Street N.W., Suite 249
 Washington, DC 20001
 Phone (202) 624-5821
 Fax (202) 624-5806
 E-mail tbianchi@aaashto.org
 Internet www.aashtoware.org



2970 SW 50th Terrace
 Gainesville, FL 32608
 Phone (352) 381-4400
 Fax (352) 381-4444
 E-mail info@infotechfl.com
 Internet www.infotechfl.com

The AASHTOWare logo, AASHTOWare Project Bids, AASHTOWare Project Construction & Materials, AASHTOWare Project Civil Rights & Labor, AASHTOWare Project Estimation, AASHTOWare Project Preconstruction, and AASHTOWare Project are trademarks of AASHTO. AASHTOWare and AASHTOWare Project are registered service marks and trademarks of AASHTO. The AASHTOWare Project logo is a registered trademark of AASHTO. Other product and company names mentioned herein may be trademarks and/or service marks of their respective owners. © Copyright 2017 by the American Association of State Highway and Transportation Officials, Inc. All rights reserved. This document or parts thereof may not be reproduced in any form without written permission of the publisher. Printed in the United States of America.