

Alaska DOT&PF + Sitenotes: From Pilot to AASHTOWare Data Alliance

Agenda

- Welcome & Introductions
- Alaska DOT&PF's Digital Delivery Vision/Problem Statement
- Sitenotes Overview > AASHTOWare Project Integration > Data Alliance
- Alaska DOT&PF Pilot & Early Results
- Growth & Future Goals

Introductions



Meagan Wright
Chief Data Officer
Data Modernizations and Innovation



Pavan Batchu
CEO
Co-Founder

sitenotes

KEEP ALASKA MOVING



Alaska DOT&PF's Digital Delivery Vision & Challenges



Sitenotes For Alaska DOT&PF



A mobile field reporting platform w/ offline capabilities



A replacement for paper documentation



A clear time-stamped project record



A way to capture accurate GIS data points

Alaska DOT&PF Early Results

Works offline

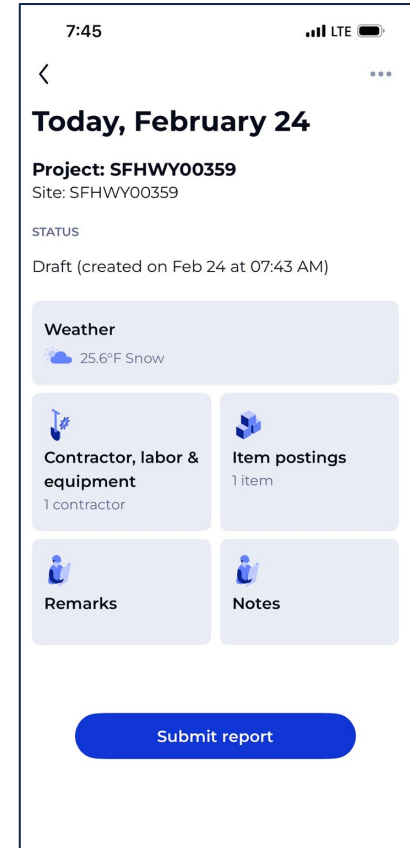
Syncs automatically when connected

Pulls updated data hourly from AASHTOWare

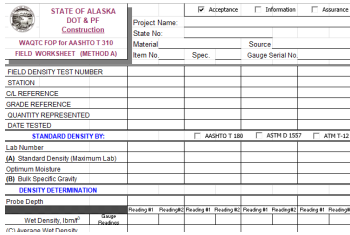
Submits daily work reports directly from the field

Allows DWR Agency Views to be entered from the app

Improves efficiency in the field



Growth and Future Goals



STATE OF ALASKA DOT & PI Construction
WAGTIC POP for AASHTO T 316
FIELD WORKSHEET (METHOD A)

Project Name: _____
State No: _____
Material: _____ Source: _____
Item No: _____ Spec: _____ Gauge Serial No: _____

FIELD DENSITY TEST NUMBER: _____
SECTION: _____
CL REFERENCE: _____
GRADE REFERENCE: _____
QUANTITY REPRESENTED: _____
DATE TESTED: _____

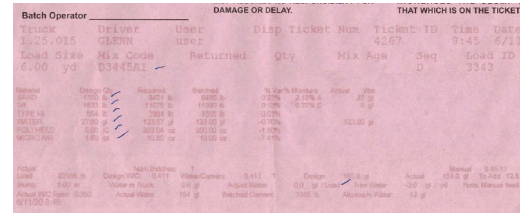
STANDARD DENSITY BY: _____
ASTM D 1557 _____ ASTM D 1587 _____

Lab Number: _____
(A) Standard Density (Maximum Lab)
Optimum Moisture
(B) Bulk Specific Gravity

DENSITY DETERMINATION

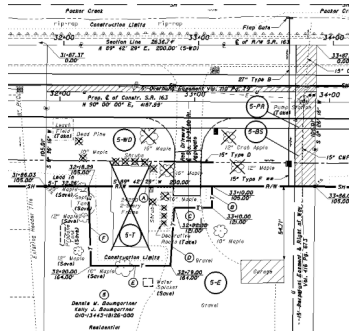
Probe Depth: _____
Wet Density, lb/cu ft: _____
(*) Average Moist Parameters

Sample records for field tests



Batch Operator		DAMAGE OR DELAY		THAT WHICH IS ON THE TICKET.			
Truck	Driver	User	Disp	Ticket Num	Ticket ID	Time	Date
125,015	GLENN	user		4267		9:45	6/11/
Load	Size	Mix Code	Returned	Qty	Mix Age	Seq	Load ID
6.00	yd	0344551					3143
Material	Design	Design	Design	% Work	Moisture	Comp	File
TYPE 1	9.00 yd	0407	0307	7.2%	4.4%		
TYPE 2	9.00 yd	11070	11070	0.0%	0.0%		
TYPE 3	9.00 yd	7068	7068	0.2%	0.0%		
TYPE 4	0.00 yd	13377	13377	-1.7%		13377	
TYPE 5	9.00 yd	00304	00304	-1.2%			
TYPE 6	9.00 yd	10300	10300	0.4%			

Importing batch data



GIS & Project Alignment Integration



Integration with Trimble