



E-TICKETING

The Journey to Full Digital Oversight

Turning Field Activity into Digital Inspection,
As-Builts, and Safer Outcomes

HaulHub Technologies

Eddie Chavez



POWERED BY **HAULHUB**
TECHNOLOGIES



About Speaker

Eddie Chavez

Manager of Government Solutions

- Based in San Antonio, Texas
- Immune to pain sports fan
- Start-Up Warrior: Have spent my career digitizing tickets in the construction and logistics industry.
- Partnered with more than 15 agencies nationwide to implement the E-DOT Portal years.

Solutions Expert



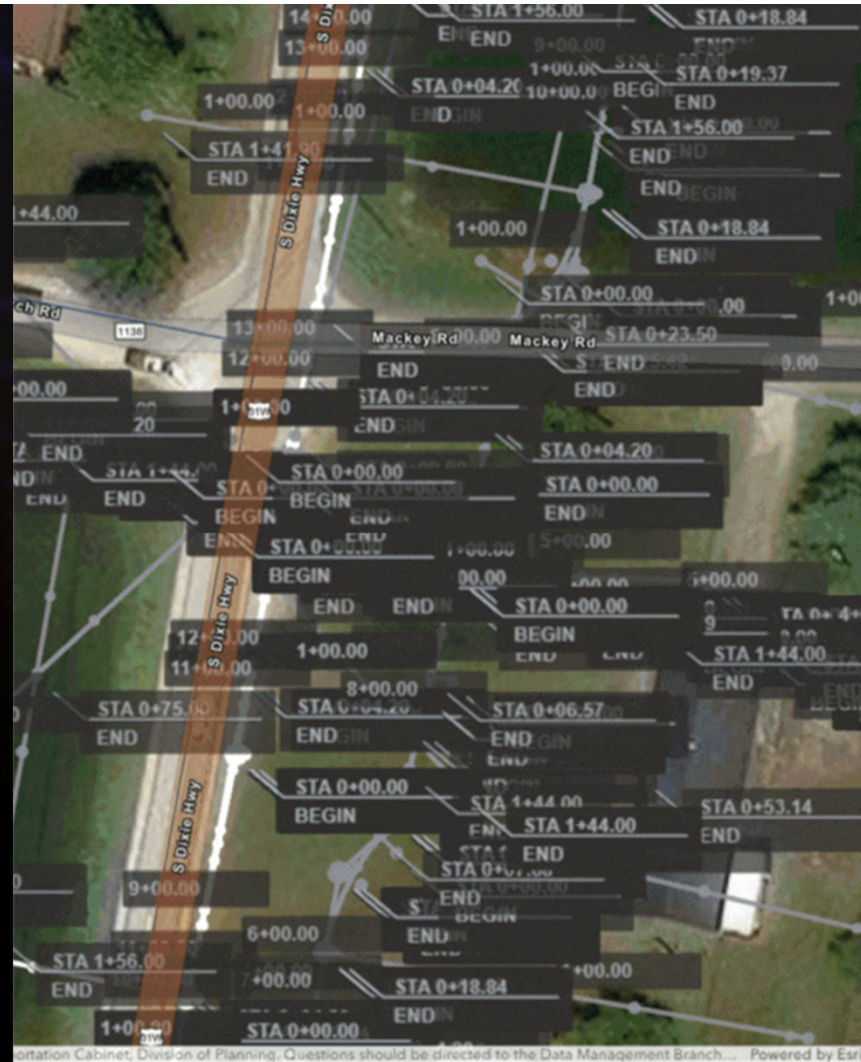
From Last Year to Today

2025

Enhancing ADCMS Capabilities
Streamlining Digital Stationing

2026

Driving Adoption & Outcomes
Powering Work Zones & Field Visibility

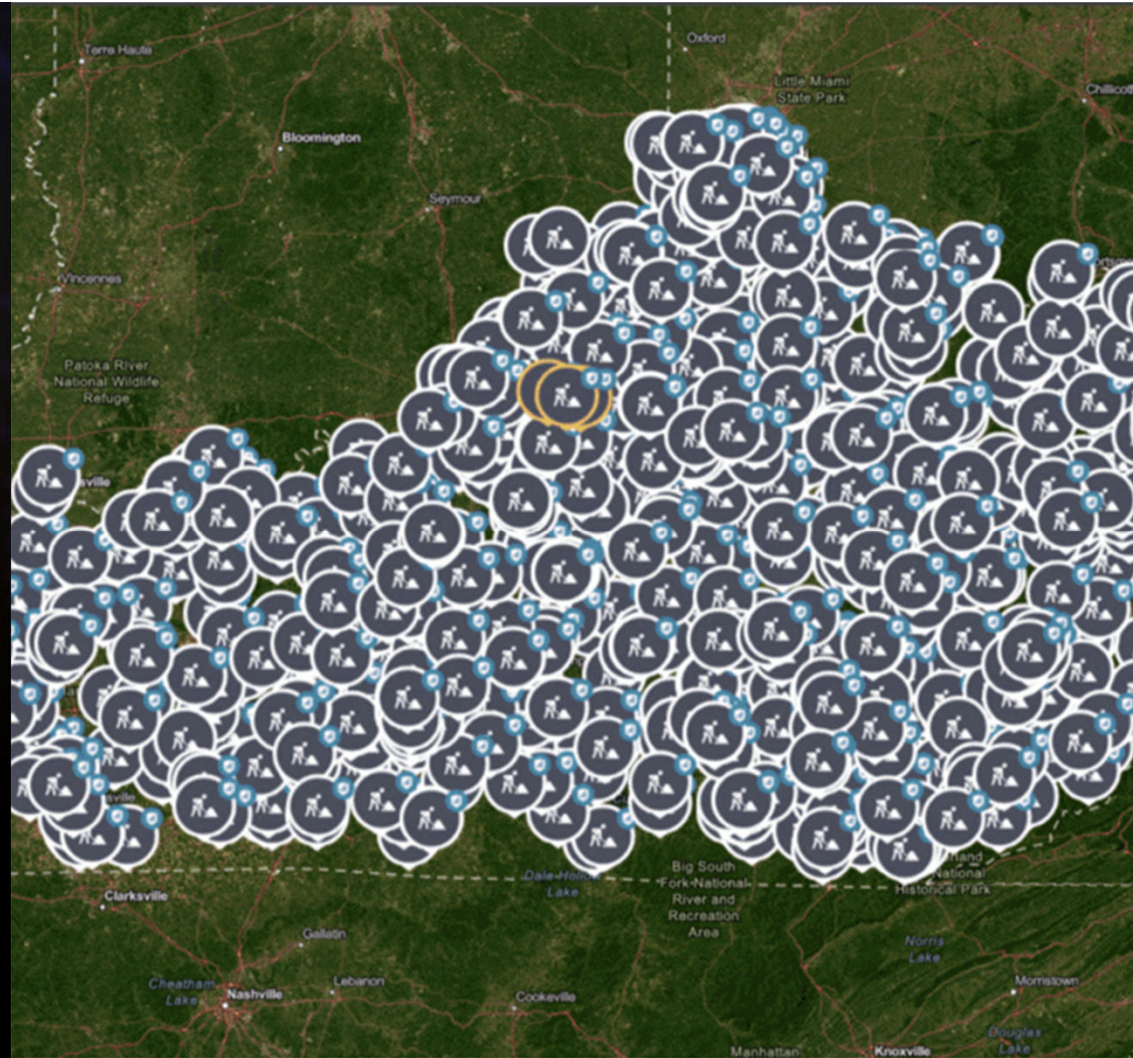


2026 AASHTOWare Connect | April 21-22 | Des Moines, IA

The EDOT Portal Has Evolved

e-Ticketing is the basis for comprehensive construction operations including:

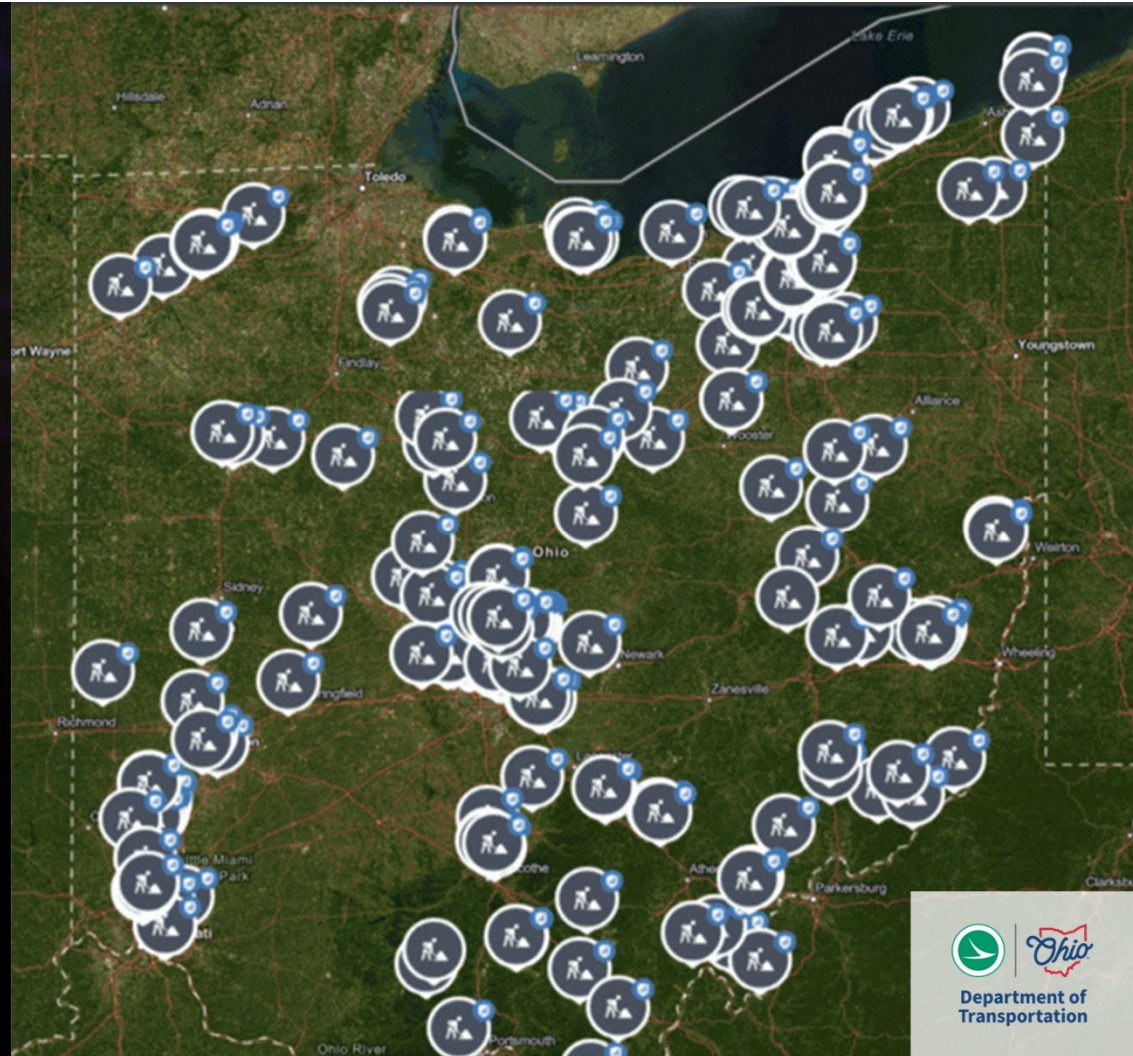
- Enhanced Material Inspection
 - Equipment Data, Inspector Notes, Pay Codes, Photos
- Digital Stationing
 - Eliminating data silos
- Automated Work Zones
 - Clear Messages to the Traveling Public



2026 AASHTOWare Connect | April 21-22 | Des Moines, IA

Ohio DOT: Scaling Through Value

- Spec update → e-Ticketing required statewide
- Strong supplier integration momentum
- Stationing and work zones adoption now exceeds 300 projects
- Sampling Process Enhancement and Line Striping e-Ticketing



2026 AASHTOWare Connect | April 21-22 | Des Moines, IA

Kansas DOT: Raising the Bar

Early Adopter of e-Ticketing

Focus on Digital Stationing and
Work Zones

Targeting 92%+ Inspection
Coverage

Moving from Adoption →
Performance



2026 AASHTOWare Connect | April 21-22 | Des Moines, IA

Contractor Adoption Is Growing

Delaware Driving Contractor Engagement

Expansion into Pennsylvania

Growing Demand Across States



2026 AASHTOWare Connect | April 21-22 | Des Moines, IA

Adoption Is Accelerating

68% Year-over-Year Growth in Digital Inspection Adoption (YoY)

States expanding into new material types w/ focus on catching RMC up to asphalt e-Ticketing

Increasing Contractor Access to EDOT Capabilities Across the Country

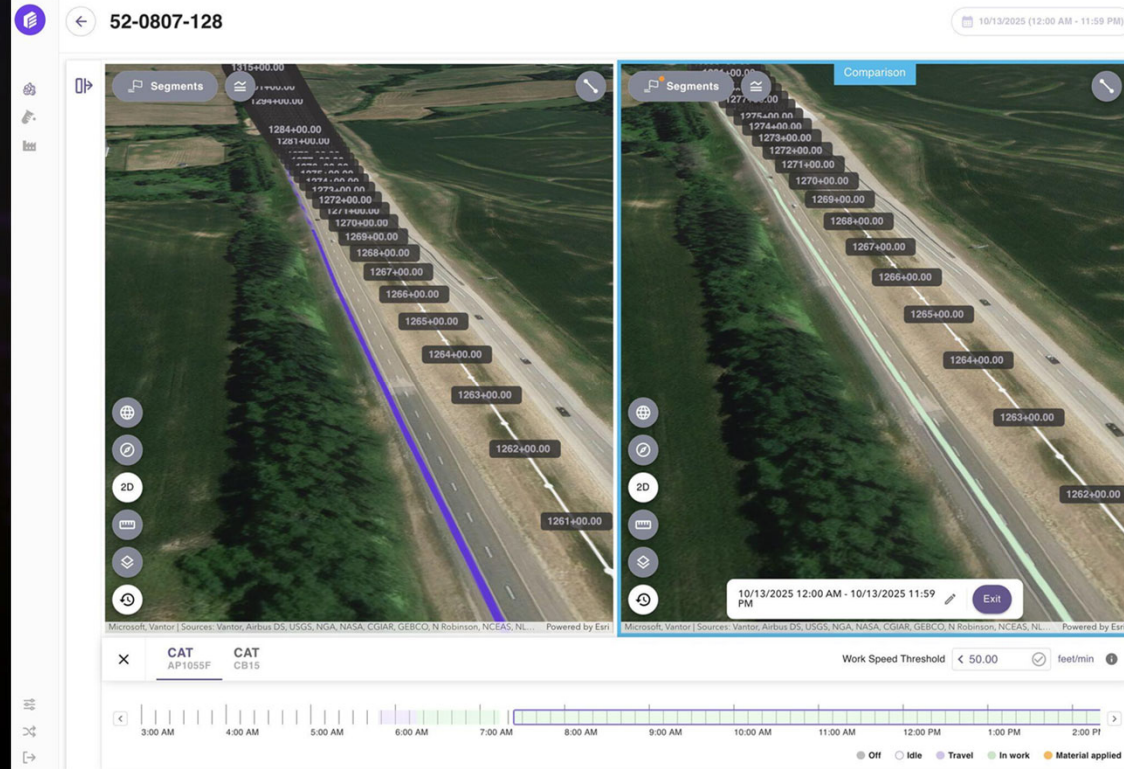


2026 AASHTOWare Connect | April 21-22 | Des Moines, IA

As-Built In Action

As the machines move through the project, telemetry flows into EDOT and automatically generates the roadway as-built.

Those records will ultimately feed future asset maintenance systems.



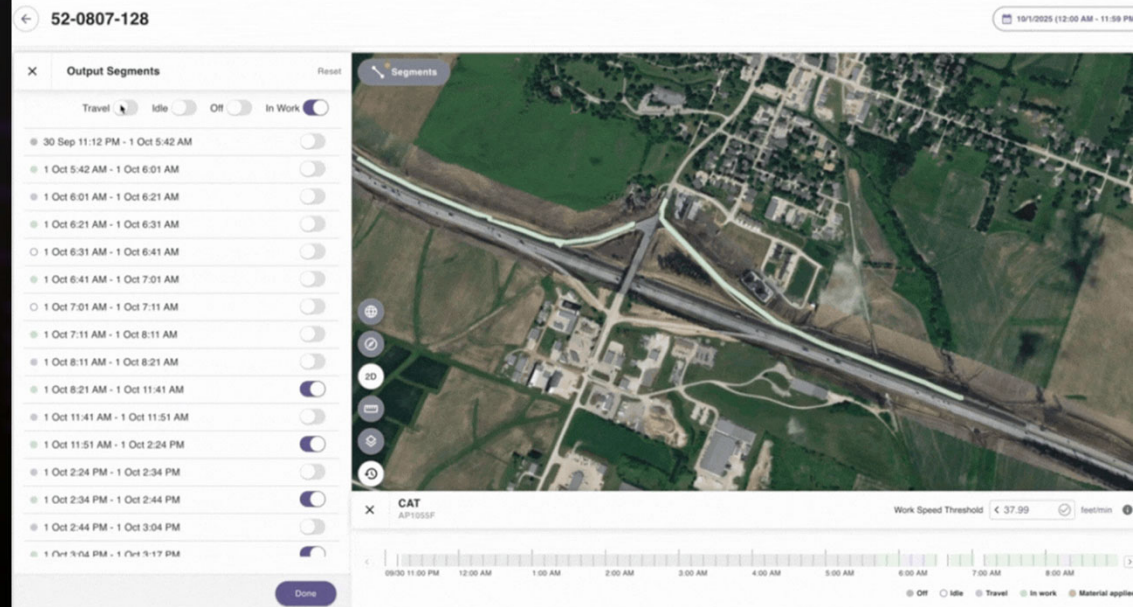
Left (purple): paver — Caterpillar Inc. AP1055F placing asphalt.

Right (green): roller — Caterpillar Inc. CB15 compacting it.

2026 AASHTOWare Connect | April 21-22 | Des Moines, IA

As-Built In Action

Estimated as-built locations of material loads auto generated based on timing, ticket data, user location, and equipment telematics



Questions? Get In Touch

Eddie Chavez

Manager of Government Solutions



Email : heriberto.chavez@haulhub.com



Phone : 210-473-5149



Web : www.e-dot.com



in

Solutions Expert

